

Schilke Music Products

Chicago, Illinois

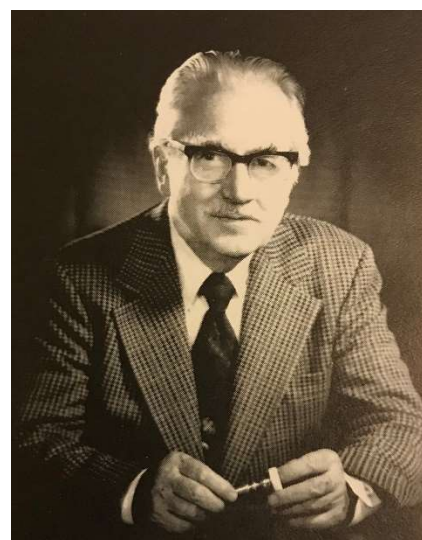
- 1910 Reynold Otto Schilke is born on June 30th in Green Bay Wisconsin (Groves).
- 1918 Schilke starts studying cornet under Del Wright (Groves).
- 1921 Schilke begins his professional career with the Orpheum Vaudeville Circuit and the Holton factory band (Groves). He observes brass instrument making at Holton.
- 1920s Schilke works for a local gunsmith during high school, learns tool & die making, and starts experimenting with mouthpiece making (Dundas).
- 1927 Schilke starts making custom mouthpieces for all brass instruments with designs influenced by Michael Getz and the L. A. Schmidt Co. of Cologne (Dundas).
- 1927 Schilke studies for one year at Brussels Conservatory and learns about Victor Mahillon's studies on sound wave nodes that can affect intonation (Wikipedia & Dundas).
- 1928 Schilke moves to Chicago to study at Chicago & Northwest University and play professionally. He becomes a student of Edward Llewellyn & neighbor to Elden Benge (Wikipedia). He starts developing his idea for the tuning bell (Groves). Schilke gets a part-time job with a small mouthpiece maker in Chicago who made them for Edward Llewellyn [possibly Harry Jacobs] (Horn-u-copia).
- 1934 Schilke starts helping Elden Benge in trumpet making (Groves).
- 1936 Schilke starts as the 2nd trumpet player for the Chicago Symphony Orchestra (CSO).
- 1937 A newborn son to wife Alice dies in Chicago.
- 1939 Schilke starts as principal trumpet with the CSO when Benge leaves (CSO). He designs the Committee model trumpet for Martin (Schilke).
- 1940 Reynold Schilke, orchestra musician, #6115 N. Fairfield Ave, same home in 1935. He lists his highest grade attained as a freshman in high school (census).
- 1942 Schilke now playing 2nd trumpet with the CSO (CSO).
- 1943 Schilke moves to 3rd assistant trumpet (CSO).
- 1947 The Schilke logo is first used on Oct. 30 (TM office).
- 1950 Schilke now playing 4th trumpet (CSO). His home is at 926 Belle Plaine Ave, Park Ridge, IL (census).



- 1951 Schilke ends full time playing for the CSO (CSO).
- 1955 Schilke designs the Magna model trumpet for Martin.
- 1956 Schilke Music Products is founded to make high-quality brass instruments. Originally with Philip Farkas who later leaves. He initially sells Holton products.
- The William Frank Co. ends and the machinery is sold to Schilke who uses it to start his own production. He starts with three workers; Ben Adowski, Bill Biehl, and Will Scarlett [who runs the office until 1966] (Everything Trumpet).
- 1959 Schilke moves from his home workshop in Evanston to #183 West Washington St, Chicago (ET).
- 1963 Schilke moves shop to 223 W. Lake St on the 4th floor of the Lyons Band Instrument Company (ET).
- The first use of the trumpet logo is on July 21 (TM office).



- 1966 Schilke is hired as a consultant for Yamaha (Groves).
- 1967 Schilke moves to #529 S. Wabash Ave (ET).
- 1968 Schilke introduces his tuning bell design (Groves).
- 1970 Schilke is granted patent #3,527,135 through Yamaha for the tuning bell design.
- 1973 Schilke has 34 workers making 59 models (Groves).
- 1974 Schilke operates another factory on Beecher St in Winfield, IL where horns were made. The finishing was done at the Wabash Ave plant (Photo 2 of possible Winfield plant).
- 1981 The Winfield plant closes (ET).
- 1982 Reynold Schilke dies in Sun City, AZ. Son Renold E. and daughter Joan assume ownership (Wikipedia).
- 1989 Schilke moves to Melrose Park (photo 3) (ET).
- 2002 The business is sold to Andrew Naumann, a veteran of Getzen, on October 31. His baroque trumpets are now made there (Naumann website).
- 2012 The "Schilke Handcraft" logo is trademarked (TM office).



#529 South Wabash Ave, Chicago: 1967-1989

This is now an empty parking lot, but the 1950 Sanborn map shows this as the Red Cross building.

Beecher St factory in Winfield: 1974-1981

This was used for an assembly factory. I have not found an actual address, but below is the only factory on the street.



#4520 James Place, Melrose Park: 1989-present

This is the current location for Schilke in 2023.

